

1.

A yellow traffic light means:

The traffic signal is changing from green to red.

A. Use caution proceeding through the intersection.

The light is about to turn green. Get ready to

B. proceed.

You should increase speed to ensure that you can get through the intersection before the light turns

C. red.



D. You should slam on your brakes.

---

2.

This sign means:

You may pass only when the vehicle ahead of you

A. is going slower than the speed limit.

B. End of a No Passing zone.

C. No passing at night only.



D. Beginning of a No Passing zone.

---

3.

This sign means:

You are near a school. Prepare to stop for children

A. and all pedestrians.

You are near a school and should drive cautiously

B. only on school days.

C. You may disobey signals from crossing guards.



You must always make a complete stop at the  
D. marked crosswalk ahead.

---

4. Which of the following statements is true about infant and child car safety seats?

Children under the age of four must be properly

- A. restrained in an approved safety seat.
- B. The back seat is the safest place.
- C. All of these answers are correct.



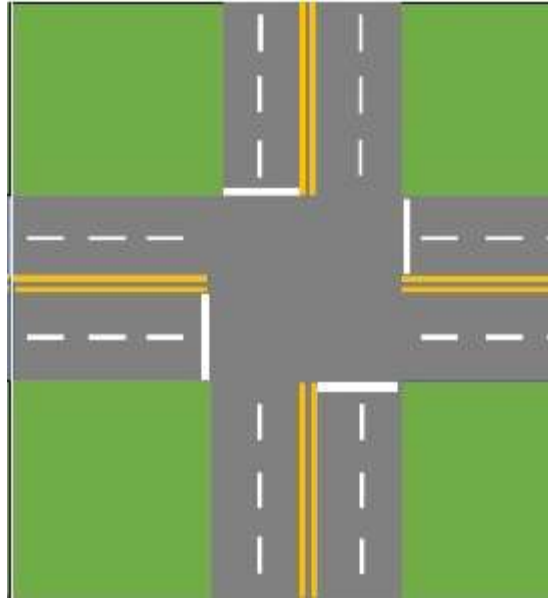
It is not safe to hold a child in your lap while riding  
D. in a motor vehicle, even if you use a seatbelt.

---

5. When you make a left turn onto a two-way street, which lane should you enter?

The first lane available to the right of the

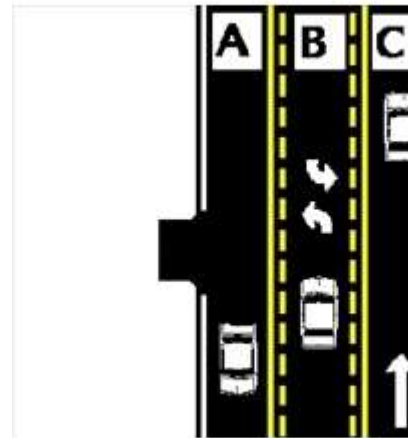
- A. centerline.
- B. other traffic.
- C. The first lane to the left of the centerline.



D. The second lane to the right of the centerline.

6. When there is a shared center turn lane, what lane must be used to make a left turn?

- A. Lane B
- B. Lane A
- C. Lane C



D. Any of these lanes.

---

7.

Carbon monoxide can render you unconscious in just.

- A. One and a half hours
- B. One hour
- C. A few minutes



D. Two hours

---

8. If an emergency vehicle approaches while you are in a Roundabout:

- A. Exit Roundabout immediately and pull over  
Pull onto the roundabout apron so Emergency vehicle may
- B. pass
- C. Stop and let emergency vehicle pass



D. Switch lanes

---

9.

To make a right turn on a red light:

You must first come to a complete stop, and unless prohibited

- A. by a sign, turn when safe to do so.
- B. Right turns on red are not legal in Minnesota.
- C. You must be turning from a one-way street.



Slow down, look for pedestrians and cars, and if clear, make  
D. the turn.

---

10

. While waiting to turn:

- A. signal at least 50 feet before the turn.
- B. keep your wheels straight while waiting to turn.



- C. apply your brakes while making the turn.

---

11 When an emergency vehicle (such as police or ambulance) is . stopped on the right side of a multi-lane road:

- A. You are required to stop on the side of the road.
- B. You should alert other drivers by using your horn.
- C. You should maintain your lane position and speed up.



You should safely move to the lane furthest away from the D. emergency vehicle.

12

- . A double solid yellow line:
  - Indicates that passing is prohibited
- A. in both directions.
  - Separates traffic moving in the
- B. same direction.
- C. Indicates that passing is allowed.



Indicates the same as a dashed  
D. yellow line.

---

The only time you are NOT  
required to stop when approaching  
13 a school bus with flashing red  
lights on and stop arm extended is:

- When passing on the right side of  
A. the bus.
- When you are driving on a one-  
B. way street.
- When there is more than one lane  
of traffic traveling in the same  
C. direction.



When you approach it from the  
front on the opposite side of a  
D. separated roadway.

---

14 A person will violate the  
Minnesota Open Bottle Law if:  
The law does not apply to anyone  
possessing a Commercial Driver's

- A. License.
- They have an open container of  
alcohol in the passenger area of  
B. the vehicle.
- They carry a bottle of wine in the  
C. trunk.



The law only applies to vehicles  
D. on interstates.

15 Safety benefits of diverging

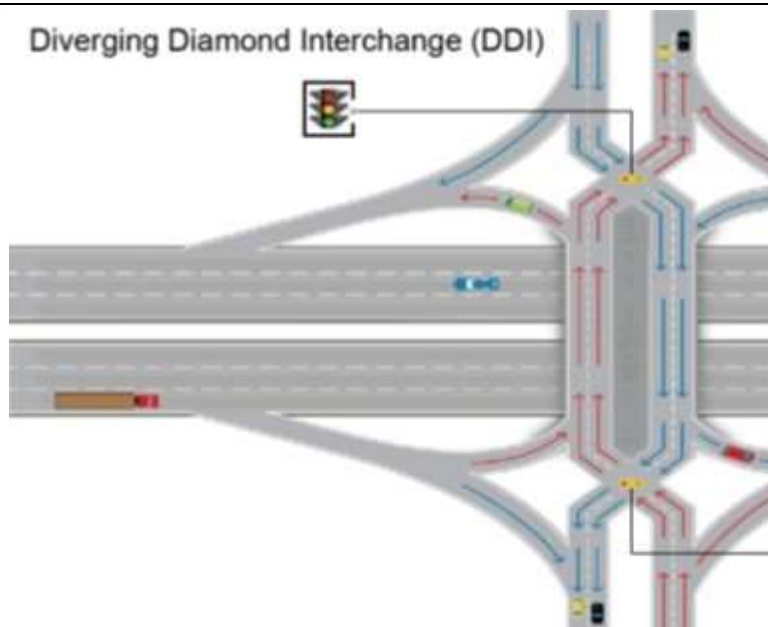
. diamond interchanges include:

A. Pedestrian crossings are longer.

Wrong way entry to ramps is

B. easier.

C. Limited sight distance at turns.



D. Fewer conflict points.

16 According to Minnesota's Speed

. Laws:

You won't be ticketed driving the

A. posted speed limit.

You should drive at a speed no  
faster than is reasonable under  
existing weather and road

B. conditions.

You should drive at the same

C. speed as the other vehicles.



- You must drive the posted speed  
D. limit at all times.
17. Unless different limits are posted, the speed limit  
for urban (residential) areas is:
- A. 35 MPH
  - B. 25 MPH
  - C. 20 MPH



D. 30 MPH

- 
18. When you are facing this sign, all vehicles must  
yield to you.
- A. False.





B. True.

---

19.

What does this sign mean?

Only persons using wheelchairs may park in this space.

A. space.

Only vehicles with physically disabled license

B. plates or parking certificates may park here.

Any vehicle carrying a person who is physically

C. disabled may park in this space.



If all other parking spaces are taken, you may

D. park in this space.

---

20.

This sign means:

Driver in right lane must exit at the next

A. intersection.

Merging traffic, drivers in the right lane must

B. merge left.

Added lane, traffic may enter but merging is not

C. necessary.



D. Right lane ends, merge left.

---

21.

This sign means:

The pedestrian crosswalk is always marked by

- A. white lines.
- B. yield to pedestrians crossing from the right only.
- C. to clear before crossing the road.



A motorist must stop before the crosswalk to

- D. yield to pedestrians crossing from either side.

---

22.

This sign means:

You should check your brakes. The road ahead

- A. goes down a steep hill.
- B. ahead.
- C. road ahead.



- Weigh station ahead. Trucks must prepare to  
D. exit.
- 23.

What does this sign mean?

This sign warns of a railroad crossing ahead. Slow

- A. down and look carefully for trains.  
This sign means that all vehicles are required to  
B. stop at the railroad crossing ahead.



- Be prepared to accelerate if a train is approaching  
C. the crossing ahead.

- 
- This emblem is displayed on the rear of vehicles  
24. that are designed to travel less than \_\_\_\_ miles per  
hour.
- A. 20 mph  
B. 50 mph  
C. 30 mph



D. 10 mph

---

When passing a bicyclist the minimum distance  
25. you must keep between your vehicle and the  
bicycle is:

- A. 6 feet.
- B. 3 feet.
- C. None is required.



D. As much space as a car.

---

According to Minnesota's distracted driving laws  
26. which of these could be considered illegal while  
driving?

- A. Staring at a crash scene
- B. Using an electronic device to access the internet
- C. Day dreaming



D. All of these answers

---

27.

This sign means:

Drive cautiously, a construction flag person is

- A. ahead.
- B. Yield to pedestrians in the crosswalk ahead.
- C. A school crossing flag person is ahead.



D. Be prepared to turn left at the intersection ahead.

---

28.

A green road sign:

- A. Is a warning sign for motorists.
- B. Warns drivers in construction zones.
- C. Guides and informs motorists.



D. Prohibits and commands the driver.  
29

- . “Zipper Merge” benefits drivers by:
  - A. Increasing traffic backups
  - B. Creating a sense of fairness and equity.
  - C. Increasing road rage



Increasing the difference in speeds between the lanes of  
D. traffic

---

30

- . Solid white lines on a road are meant to:
  - A. Not allow pedestrians to cross at that location.
  - B. Discourage lane changing.
  - C. Separate traffic moving in opposite directions.

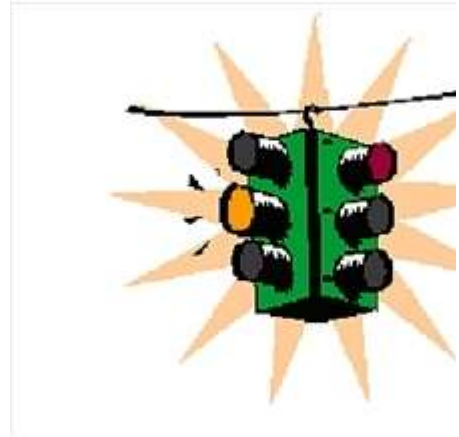


Encourage movement between lanes of traffic traveling in  
D. the same direction.

---

31

- . A flashing yellow light means:
  - A. Proceed through the intersection with caution.
  - B. You must stop at the intersection ahead.
  - C. You should speed-up for the intersection ahead.



You do not have to look for traffic at the intersection  
D. ahead.

---

32

- . When safe to do so, a motor vehicle driver should:
  - A. Not move into a bicycle lane to prepare for a turn.
  - B. Drive in a bicycle lane.
  - C. Move into a bicycle lane only to prepare for a turn.



D. Pass close to bicyclists in a bicycle lane.

---

33

- . When driving through a highway work zone, you must:
  - A. reduce your speed to the posted work zone speed limit.
  - B. All of these answers are correct.
  - C. follow the flag person's directions, if one is present.



D. watch out for workers and equipment.

- 
- 34 In a driving emergency, immediately slamming on the
- . brakes may NOT be the best or safest action to take.
  - A. True.





B. False.

35.

When is a complete stop required?

When directed to do so by a flag person at a road

- A. construction site or by a police officer.
- When you must yield to a pedestrian in the
- B. crosswalk.
- C. All of these answers are correct.



When you are behind a school bus displaying

- D. flashing red lights and STOP arm.

---

36.

If you miss your exit from a freeway:

Roll down your window and ask other drivers for

- A. help.
- B. Stop on the shoulder and back-up to the exit.
- C. Proceed to the next exit.



D. Stop in any lane of the freeway.

---

37.

Driving in Minnesota is:  
Not permitted unless you have a Minnesota

- A. Identification Card.
- B. A right of all U.S. Citizens.  
A privilege that can be taken away if you abuse
- C. it.



D. A right of all Minnesota residents.

---

38.

Because of its large size, a truck:  
has blind spots to the front, sides, and rear of the

- A. vehicle.
- appears to be traveling at a slower speed than it
- B. really is.
- C. All of these answers are correct.



D. takes longer to pass than a car.

---

In normal driving conditions what is the  
39. MINIMUM following distance you should maintain?

- A. Five seconds.
- B. Two seconds.
- C. Four seconds.



D. Three seconds.

---

40. When entering a public road from an alley or parking lot you must:

- A. Slow down and look carefully.
- B. Stop for pedestrians only.
- C. Stop before entering the roadway.



D. Stop for traffic only.