

NTW Checklist # 9 Circle the correct answer.

1. Carbon monoxide can render you unconscious in just.
- A. One and a half hours
 - B. A few minutes
 - C. Two hours
 - D. One hour



2. A person will violate the Minnesota Open Bottle Law if:
- A. They carry a bottle of wine in the trunk.
 - B. They have an open container of alcohol in the passenger area of the vehicle.
 - C. Commercial Driver's License.
 - D. The law only applies to vehicles on interstates.



3. A flashing yellow light means:
- A. Proceed through the intersection with caution.
 - B. You must stop at the intersection ahead.
 - C. You do not have to look for traffic at the intersection ahead.
 - D. You should speed-up for the intersection ahead.



4. This sign means:
Driver in right lane must exit at the next intersection.
- A. Merging traffic, drivers in the right lane must merge left.
 - B. Added lane, traffic may enter but merging is not necessary.
 - C. necessary.



- D. Right lane ends, merge left.

5. According to Minnesota's Speed Laws:

You won't be ticketed driving the posted speed
A. limit.

You should drive at a speed no faster than is
reasonable under existing weather and road
B. conditions.

You should drive at the same speed as the other
C. vehicles.

D. You must drive the posted speed limit at all times.



Which of the following statements is true about
6. infant and child car safety seats?

A. All of these answers are correct.

B. The back seat is the safest place.

Children under the age of four must be properly
C. restrained in an approved safety seat.

It is not safe to hold a child in your lap while riding
D. in a motor vehicle, even if you use a seatbelt.



This emblem is displayed on the rear of vehicles
that are designed to travel less than ____ miles per

7. hour.

A. 30 mph

B. 50 mph

C. 20 mph



D. 10 mph

8. Solid white lines on a road are meant to:

A. Discourage lane changing.

B. Separate traffic moving in opposite directions.

Encourage movement between lanes of traffic
C. traveling in the same direction.



D. Not allow pedestrians to cross at that location.

When an emergency vehicle (such as police or ambulance) is stopped on the right side of a multi-lane road:

9. You should safely move to the lane furthest away from the emergency vehicle.
- A. from the emergency vehicle.
 - B. You are required to stop on the side of the road.
 - C. You should alert other drivers by using your horn.
 - D. up.



10. Practice driving is illegal without a valid instruction permit in your possession.

- A. False.



- B. True.

11. When you are facing this sign, all vehicles must yield to you.

- A. True.



- B. False.

12. Unless different limits are posted, the speed limit for urban (residential) areas is:

- A. 20 MPH
- B. 25 MPH
- C. 30 MPH
- D. 35 MPH



13. The only time you are NOT required to stop when approaching a school bus with flashing red lights on and stop arm extended is:

- A. separated roadway.

- B. When passing on the right side of the bus.
- C. When you are driving on a one-way street.



When there is more than one lane of traffic traveling in the same direction.

14

- . A left turn on a red light is:
 - Allowed only when turning from a one-way street onto another one-way street.
 - Allowed only when turning from a two-way street onto a one-way street.
 - Never allowed in Minnesota.
 - Allowed only when facing a red arrow.



- 15 You could be issued a ticket for using your cell phone while
- . waiting at a traffic light for.
 - A. All of these answers are correct
 - B. Accessing the internet
 - C. Texting
 - D. You have a provisional license and are using your cell phone.



- 16 When passing a bicyclist the minimum distance you must keep between your vehicle and the bicycle is:
- A. None is required.
 - B. As much space as a car.
 - C. 6 feet.
 - D. 3 feet.



17

- . When you see this sign, you may enter to go less than one block.
 - A. True.



B. False.

18

- . A traffic light that is flashing red means
 - A. Stop.
 - B. Yield.
 - C. Proceed to the right.
 - D. Caution.



19

- . This sign means:
A. Lane ends, merge right
B. Divided highway ends.
C. Narrow lanes ahead.



D. Lane ends, merge left.

All vehicles must have proper insurance coverage. Drivers must carry valid proof of insurance with them wherever they travel on

- . Minnesota public roads.
A. False.



B. True.

21

- . A yellow traffic light means:
You should increase speed to ensure that you can get through
A. the intersection before the light turns red.
B. You should slam on your brakes.
C. The light is about to turn green. Get ready to proceed.



The traffic signal is changing from green to red. Use caution proceeding through the intersection.

22 If an emergency vehicle approaches while you are in a

- . Roundabout:
A. Switch lanes
B. Pull onto the roundabout apron so Emergency vehicle may pass
C. Stop and let emergency vehicle pass



D. Exit Roundabout immediately and pull over

23

- . Safety benefits of diverging diamond interchanges include:
A. Fewer conflict points.
B. Limited sight distance at turns.

C. Pedestrian crossings are longer.



D. Wrong way entry to ramps is easier.

24.

A double solid yellow line:

- A. Indicates the same as a dashed yellow line.
- B. Separates traffic moving in the same direction.
- C. Indicates that passing is prohibited in both directions.



D. Indicates that passing is allowed.

25.

A green road sign:

- A. Guides and informs motorists.
- B. Is a warning sign for motorists.
- C. Warns drivers in construction zones.



D. Prohibits and commands the driver.

26.

Parking is not allowed:

- A. Within 10 feet of a fire hydrant.
- B. Beside a yellow painted curb.



C. All of these answers are correct.

27.

A flashing yellow left turn arrow means:

- A. No left turn
- B. Wait till the arrow turns green to turn



Yield the right of way to oncoming traffic

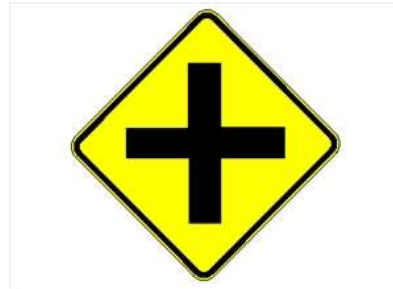
C. before turning.

28.

What does this sign mean?

Cross traffic at the intersection ahead must

- A. yield to you.
- B. All traffic must stop at the intersection ahead.
- C. Railroad crossing ahead.



Watch carefully at the intersection ahead, you

- D. may need to yield.

29.

What does this sign mean?

This sign means that all vehicles are required to

- A. stop at the railroad crossing ahead.
Be prepared to accelerate if a train is
- B. approaching the crossing ahead.

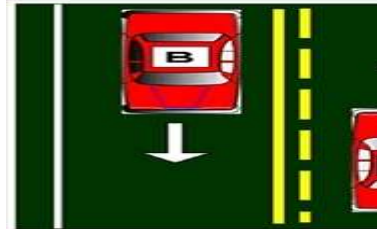


This sign warns of a railroad crossing ahead.

- C. Slow down and look carefully for trains.

30 According to the lane markings in this diagram, which statement is true?

- A. Both vehicles A and B may pass.
- B. Neither vehicle A or B may pass.
- C. Vehicle A may pass.



- D. Vehicle B may pass.

31

. When changing lanes you must:

Signal, check mirrors, and turn your head in the direction you are

- A. moving to check your "blind spot".
Turn your head in both directions to check both your left and
- B. Slow your speed below the speed of the other traffic.
- C. right "blind spots".
Signal and check only your mirror in the direction you are
- D. moving.



32

. If your vehicle starts to skid:

- A. Accelerate hard to regain control.
Steer in the direction you want to go, keeping your foot off the
- B. accelerator and brake.
- C. Use the cruise control to avoid future skids.



D. Slam on the brakes to regain control.

33

- . When driving through a highway work zone, you should:
 - A. Reduce your speed and adjust lane position away from workers.
 - B. Maintain lane position.
 - C. Maintain speed.



D. Drive slowly with your 4-way flashers on.

34 When encountering a transit bus attempting to merge from a bus

- . stop or shoulder, a driver in the right traffic lane must:
 - A. Flash your headlights.
 - B. Yield the right of way to the bus.
 - C. Continue in your lane, the bus must yield to you.



D. Drive faster to get around the bus.

35

- . When safe to do so, a motor vehicle driver should:
 - A. Move into a bicycle lane only to prepare for a turn.
 - B. Not move into a bicycle lane to prepare for a turn.
 - C. Drive in a bicycle lane.



D. Pass close to bicyclists in a bicycle lane.

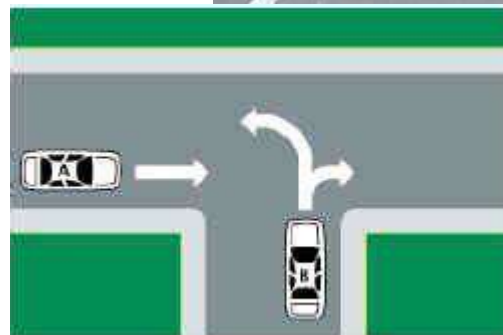
36. When two vehicles approach an uncontrolled "T" intersection:

The vehicle that is turning must yield to all

- A. cross traffic.
- B. A turn signal is not required.
- C. All vehicles must stop before continuing on.

The vehicle going straight must yield to the

D. vehicle turning.



37.

Because motorcycles are smaller than cars:
They may drive on the shoulder during rush

A. hours.

It can be difficult to judge the speed, and

B. distance of an approaching motorcycle.

C. Motorcycles always have the right of way.

D. They may share the same lane with cars.



In normal driving conditions what is the
38. MINIMUM following distance you should
maintain?

A. Three seconds.

B. Four seconds.

C. Two seconds.

D. Five seconds.

KEEP A **SAFE** DISTANCE



39.

If you miss your exit from a freeway:

A. Stop on the shoulder and back-up to the exit.

B. Stop in any lane of the freeway.

C. Proceed to the next exit.

Roll down your window and ask other drivers
D. for help.



40.

Driving in Minnesota is:

A privilege that can be taken away if you abuse

A. it.

Not permitted unless you have a Minnesota

B. Identification Card.

C. A right of all Minnesota residents.

D. A right of all U.S. Citizens.

