



## NTW Knowledge Check 4

What does this sign mean?

If all other parking spaces are taken, you may park in this

A. space.

B. Only vehicles with physically disabled license plates or parking certificates may park here.



You may lose your driving privileges if convicted of driving a \_\_\_\_\_ while under the influence of drugs or alcohol.

A. all of these answers are correct.

B. Boat

C. snowmobile or ATV



What does this sign mean?

Watch carefully at the intersection ahead, you may need to

A. yield.

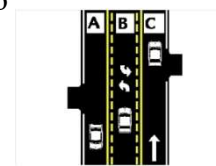
B. Cross traffic at the intersection ahead must yield to you.

When there is a shared center turn lane, what lane must be used to make a left turn?

A. Lane C

B. Lane B

C. Any of these lanes.



Carbon monoxide can render you unconscious in just.

C. Two hours

D. A few minutes



A double solid yellow line:

A. Indicates the same as a dashed yellow line.

B. Indicates that passing is prohibited in both directions.



---

---

A traffic light that is flashing red means  
A. Caution.



B. Stop.

---

This sign means:  
A. No passing at night only.



.B Beginning of a No Passing zone.

---

A driver must stop at least \_\_\_ feet away from a school bus stopped with its flashing red lights on and stop arm out?

- A. 20 feet
- B. 30 feet
- D. 6 feet.



---

All vehicles must have proper insurance coverage. Drivers must carry valid proof of insurance with them wherever they travel on Minnesota public roads.

A. True.

B. False.



---

According to Minnesota's Speed Laws:

- A. You must drive the posted speed limit at all times.
- B. You should drive at the same speed as the other vehicles.
- C. You won't be ticketed driving the posted speed limit.

D. You should drive at a speed no faster than is reasonable under existing weather and road conditions.



- 
- C. 50 mph
  - D. 10 mph
- 
-

This sign means:

- A. Lane ends, merge right.
- B. Divided highway begins, stay to the right.



To make a right turn on a red light:

- Slow down, look for pedestrians and cars, and if clear, make the
- C. turn.



- You must first come to a complete stop, and unless prohibited by
  - D. a sign, turn when safe to do so.
- 

When safe to do so, a motor vehicle driver should:

- A. Move into a bicycle lane only to prepare for a turn.
- B. Drive in a bicycle lane.
- C. Pass close to bicyclists in a bicycle lane.



- D. Not move into a bicycle lane to prepare for a turn.

In normal driving conditions what is the MINIMUM following distance you should maintain?

- A. Three seconds.
- B. Two seconds.



When entering a public road from an alley or parking lot you must:

- A. Stop for pedestrians only.
- B. Stop before entering the roadway.



When is a complete stop required?

- A. All of these answers are correct.
- B. When you must yield to a pedestrian in the crosswalk.



- C. lights and STOP arm.
-